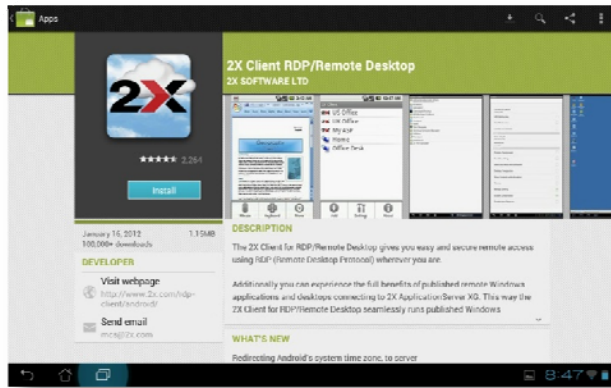


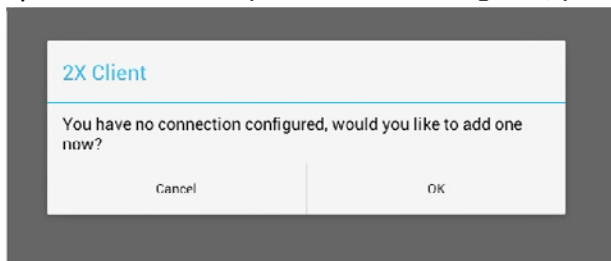
## 2X Setup for Android

Use this procedure to access EZClaim Remote on an Android tablet or phone.

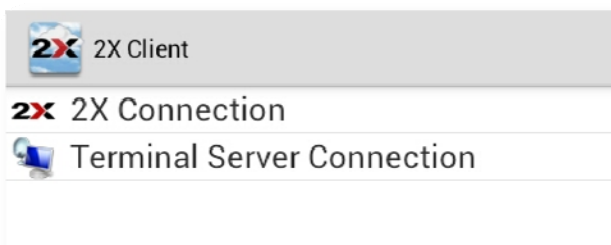
1. Download and Install the free 2X app from the Android Marketplace.



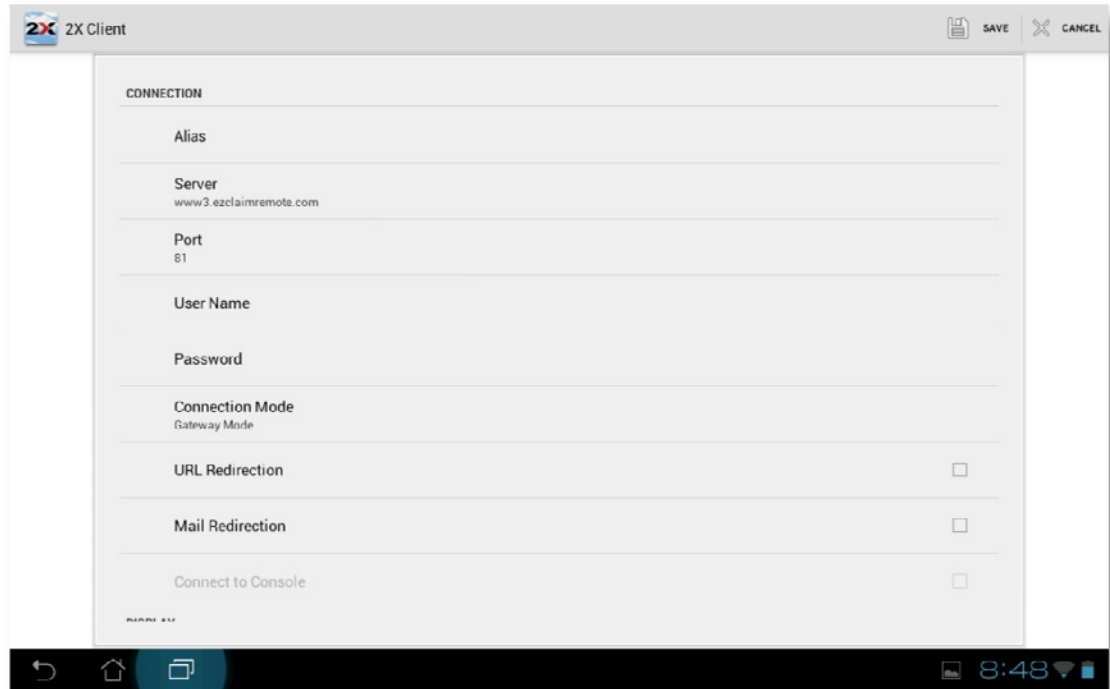
2. If you do not have any connections configured, you will be prompted to add a new one.



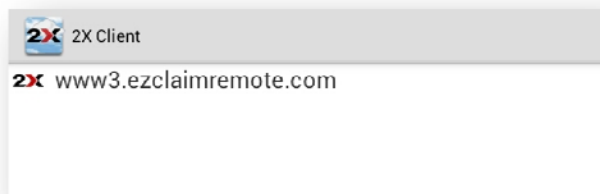
3. Choose 2X Connection.



4. Enter the Connection Settings:
  - a. Alias – Leave blank
  - b. Server – Enter the **Address** provided by EZClaim. Typically similar to `www3.ezclaimremote.com`
  - c. Port – **81**
  - d. User Name – Enter the **Username** provided by EZClaim
  - e. Password – Enter the **Password** provided by EZClaim
  - f. Connection Mode – **Gateway Mode**
  - g. **To Save** – Tap 'Save'



5. The 2X connection is complete and will be listed. Tap the label to open the connection.



6. Your EZClaim icons will appear. Tap the label to open the application.

