

Installation Instructions

1. Download and Install

[Click this link](#)

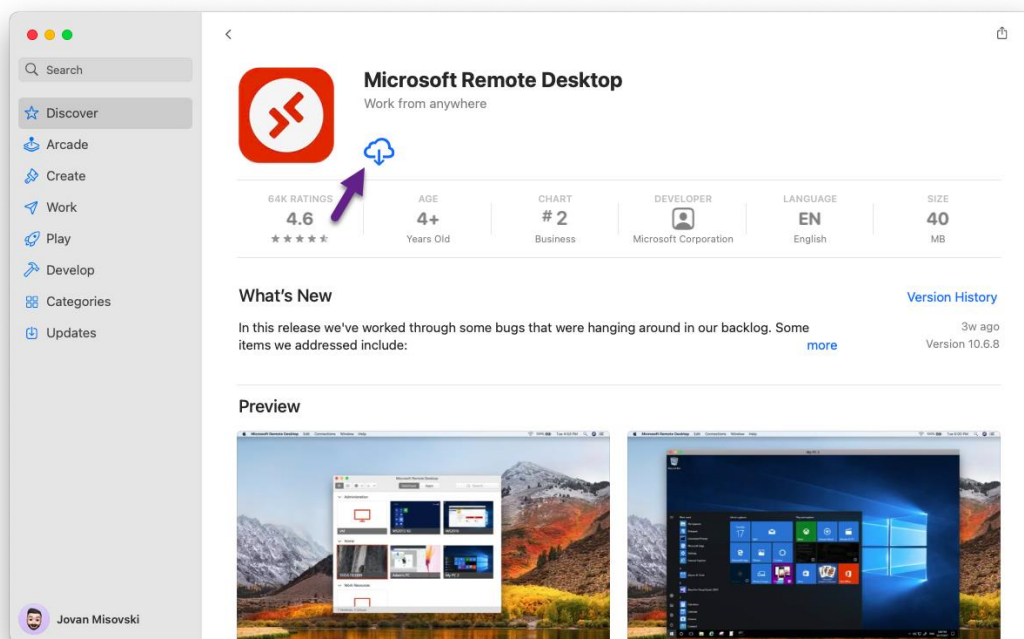
This link is a redirect link take takes you to the App Store to download the Microsoft Remote Desktop client, found on [this page](#)

Get the Remote Desktop client

Follow these steps to get started with Remote Desktop on your Mac:

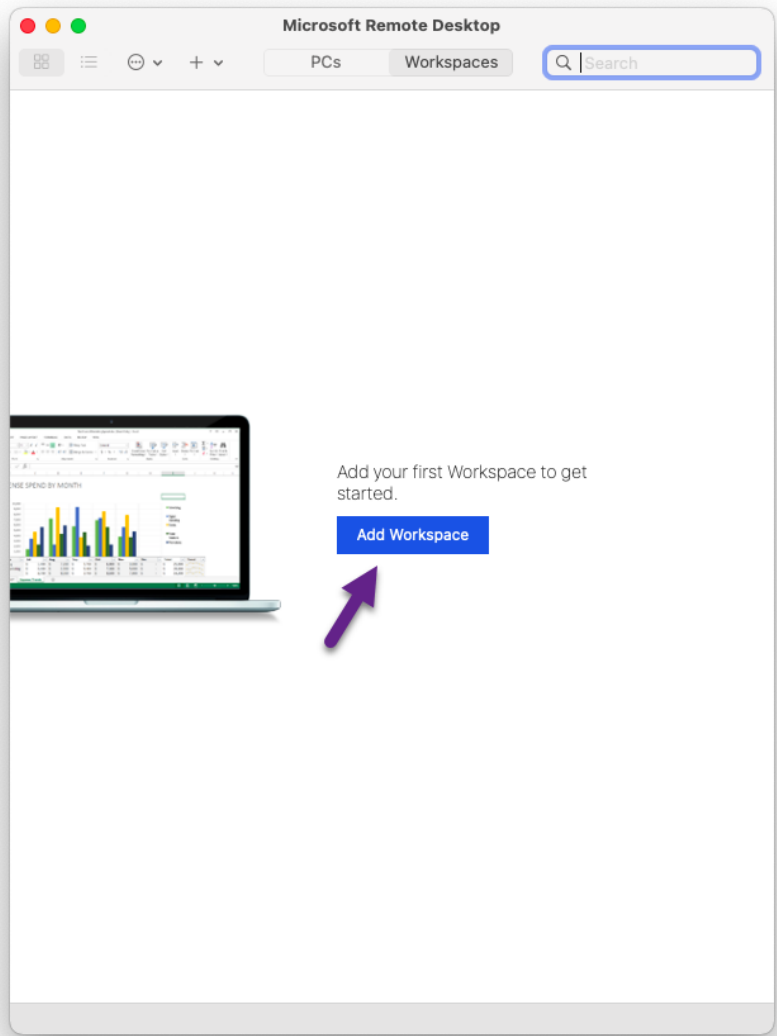
1. Download the Microsoft Remote Desktop client from the [Mac App Store](#).
2. [Set up your PC to accept remote connections](#). (If you skip this step, you can't connect to your PC.)
3. Add a Remote Desktop connection or a remote resource. You use a connection to connect directly to a Windows PC and a remote resource to use a RemoteApp program, session-based desktop, or a virtual desktop published on-premises using RemoteApp and Desktop Connections. This feature is typically available in corporate environments.

Click the button to install the app (mine is a Cloud because I've already downloaded it once).



2. Add Workspace

Once the app launches, you should see this blank screen. Click 'Add Workspace'.



Follow these instructions from the 'on this page' link above to add the workspace.

Add a workspace

Subscribe to the feed your admin gave you to get the list of managed resources available to you on your macOS device.

To subscribe to a feed:

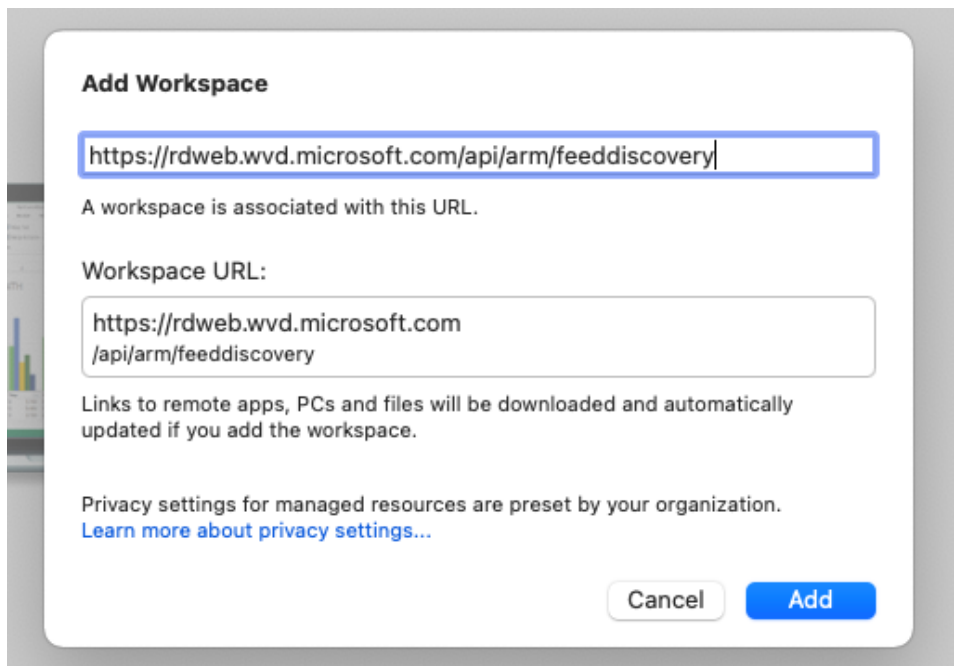
1. Select **Add feed** on the main page to connect to the service and retrieve your resources.
2. Enter the feed URL. This can be a URL or email address:
 - If you're accessing resources from Azure Virtual Desktop or Windows 365, you can use one of the following URLs:
 - For Azure Virtual Desktop (classic), use `https://rdweb.wvd.microsoft.com/api/feeddiscovery/webfeeddiscovery.aspx`.
 - For Azure Virtual Desktop, use `https://rdweb.wvd.microsoft.com/api/arm/feeddiscovery`.
 - If you're using Windows 365, use: `https://rdweb.wvd.microsoft.com/api/arm/feeddiscovery`.
 - To use email, enter your email address. This tells the client to search for a URL associated with your email address if your admin configured the server that way.
3. Select **Subscribe**.
4. Sign in with your user account when prompted.

After you've signed in, you should see a list of available resources.

Once you've subscribed to a feed, the feed's content will update automatically on a regular basis. Resources may be added, changed, or removed based on changes made by your administrator.

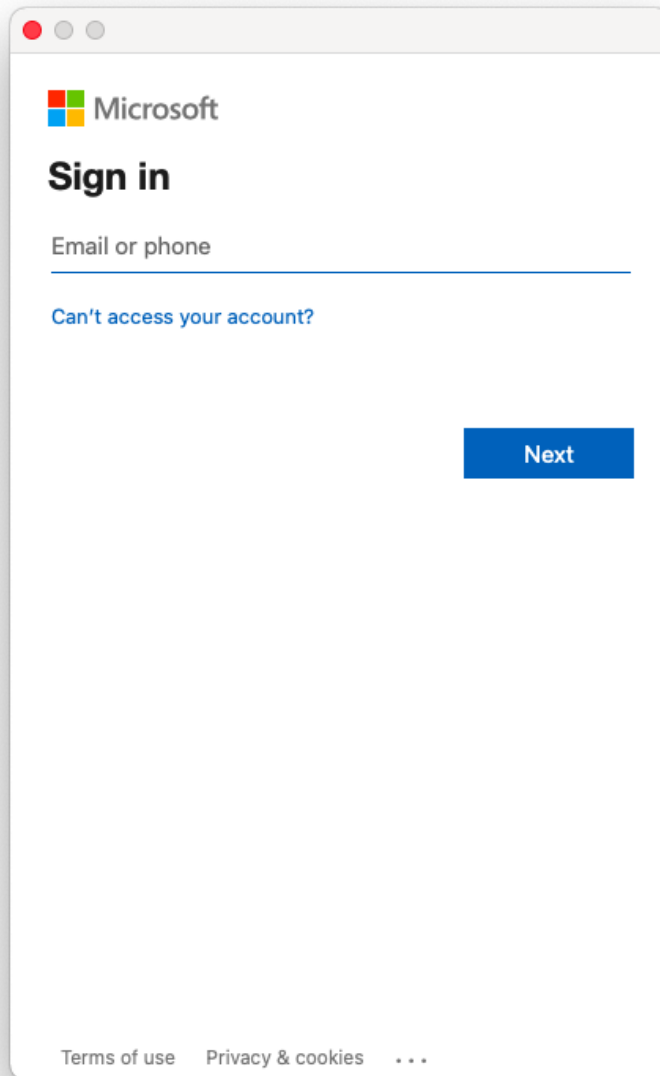
You'll want to populate the 'Azure Virtual Desktop' link in the textbox.

Here is the link for easy copying: <https://rdweb.wvd.microsoft.com/api/arm/feeddiscovery>



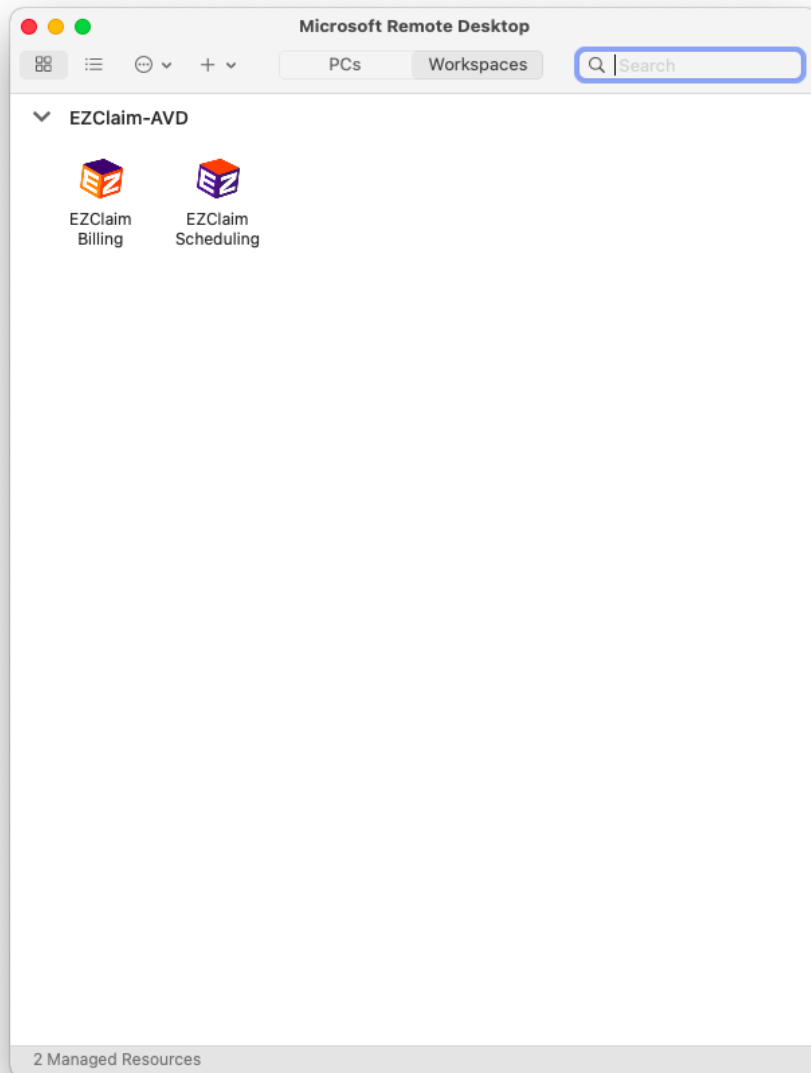
3. Sign in

Enter your username (e.g., ezclaimuser@ezclaimcloud.com) and password you use to log on to your work computer on the following screen.

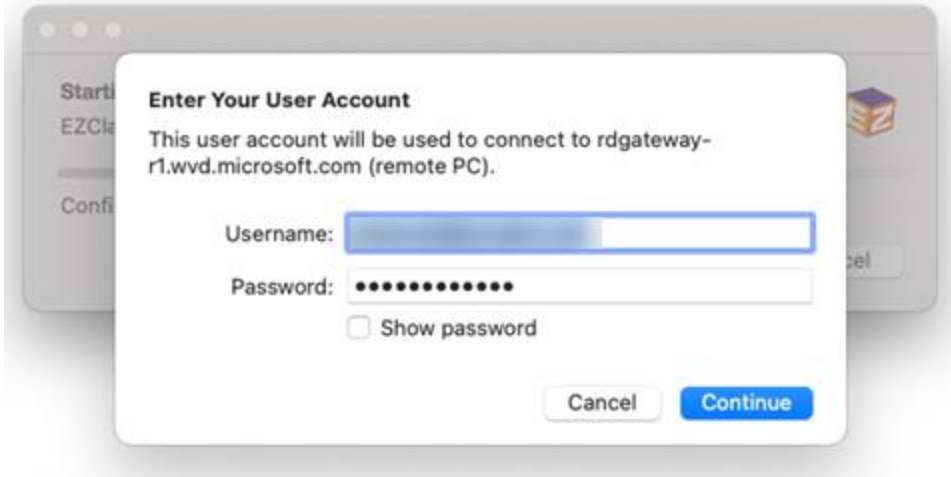


4. Launch

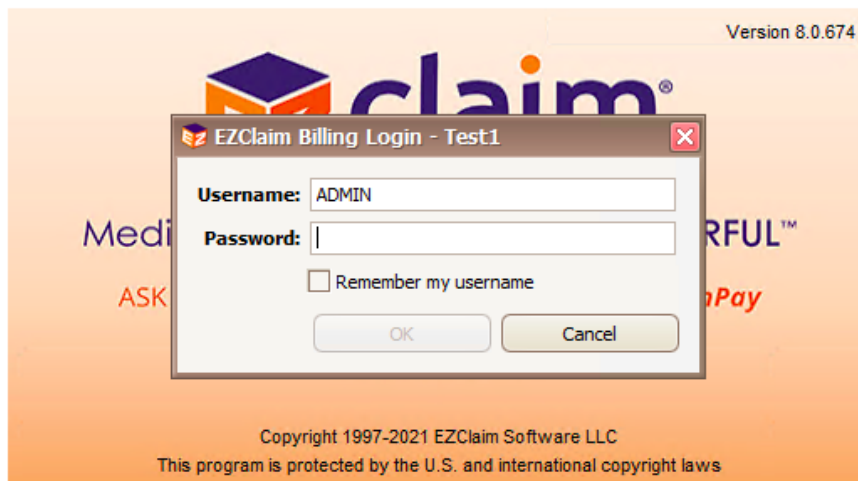
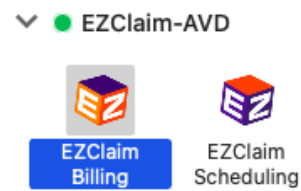
After it finishes loading, you should be brought back to the main screen with some EZClaim program icons available. Click either one to launch.



Enter your username and password once more.



Application should launch successfully! It should appear as its own application like it would if installed locally.



Finished!