

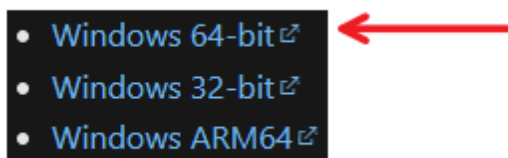
Installation Instructions

OS: Windows

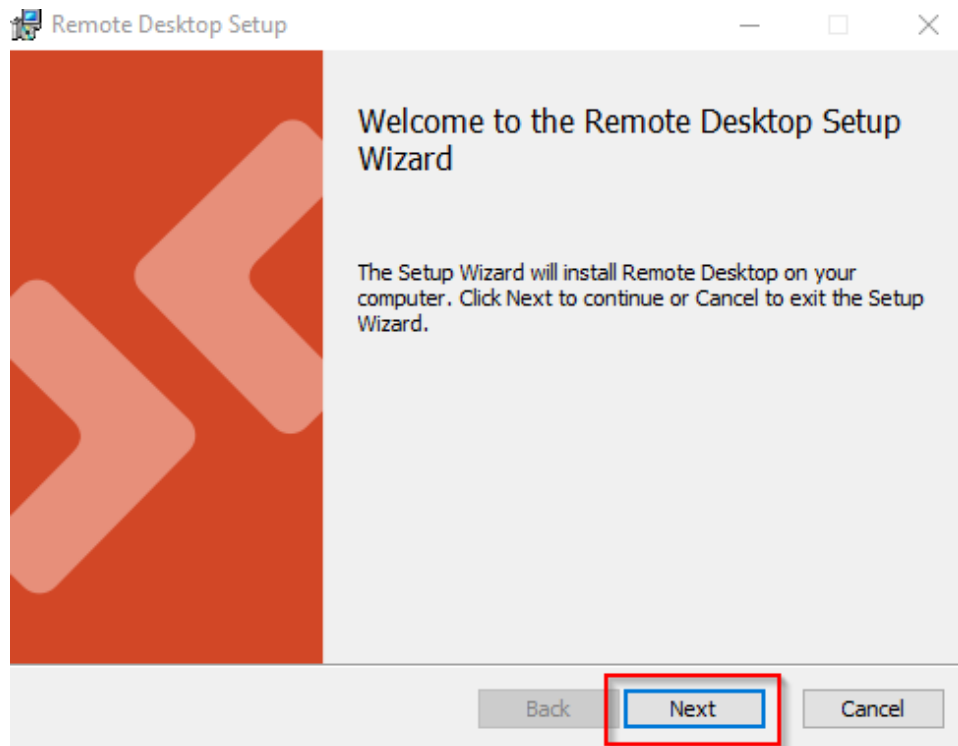
Versions: Server 2022, Server 2019, 11, 10, 10 IoT Enterprise, 7

PLEASE NOTE: You will need to be on Windows 10 or newer. Windows 7 and Windows 8.1 will not work.

0. Navigate to [Get started with the Windows Desktop client | Microsoft Docs](#) and download the version applicable to the bit-level of Windows on the local machine (in most cases this will be **Windows 64-bit**).



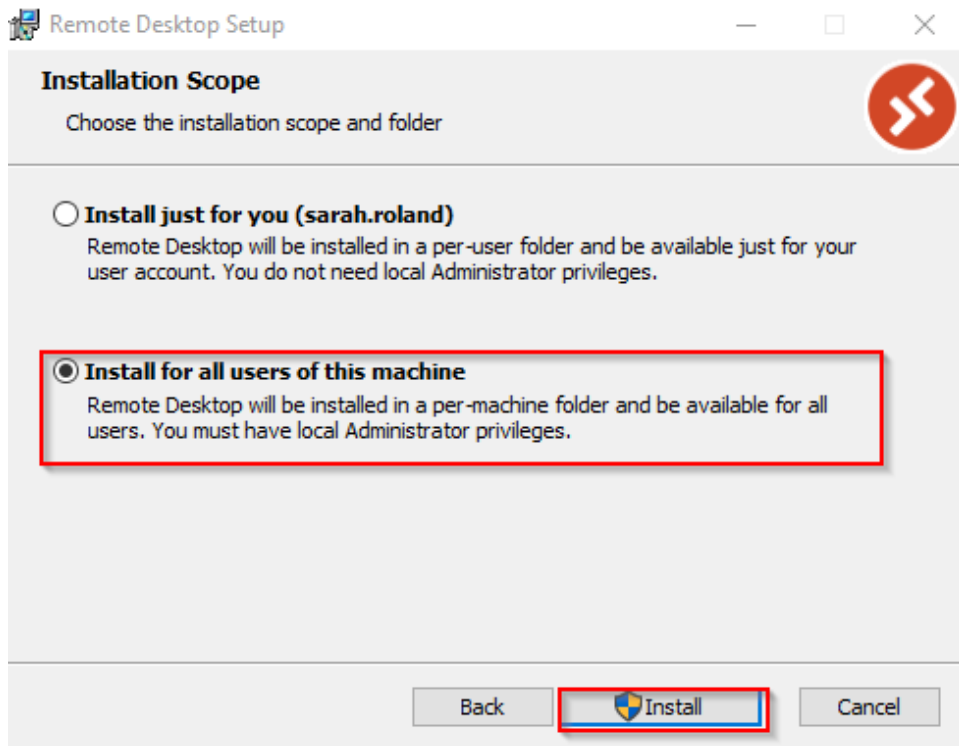
1. Open the downloaded file and click **Next**.



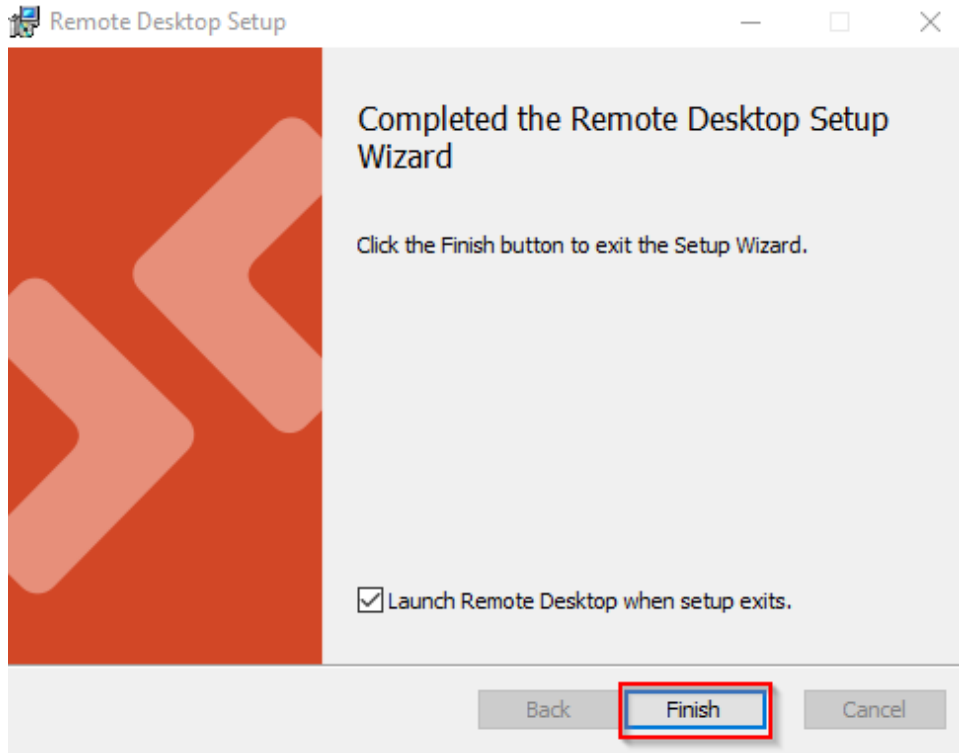
2. Check **I accept the terms in the License Agreement** and click **Next**.



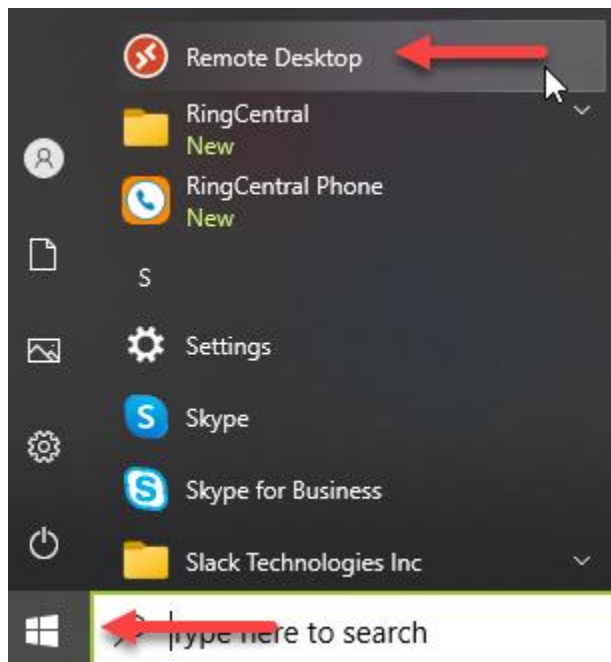
3. Select **Install for all users of this machine** and click **Install**.



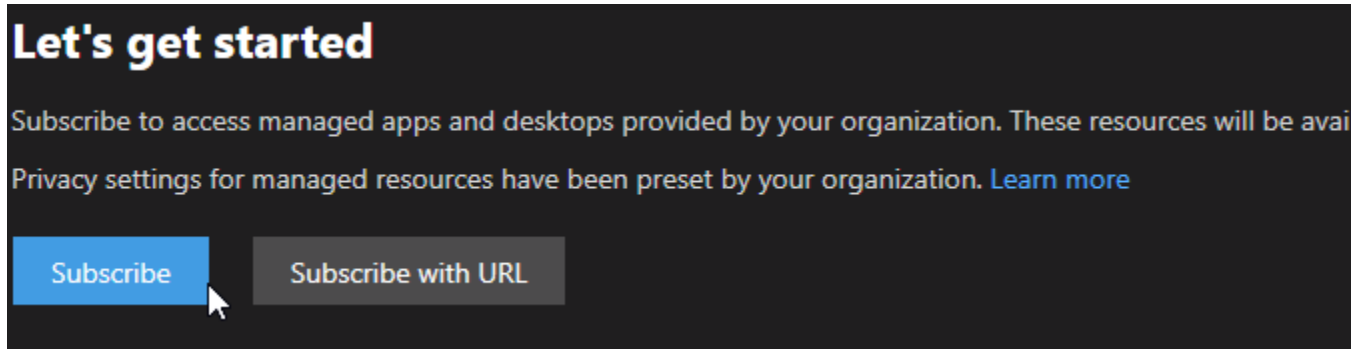
- **This will generally either need to be installed from a Local Admin account or require Local Admin authorization**
- Click **Finish** to complete the installation.



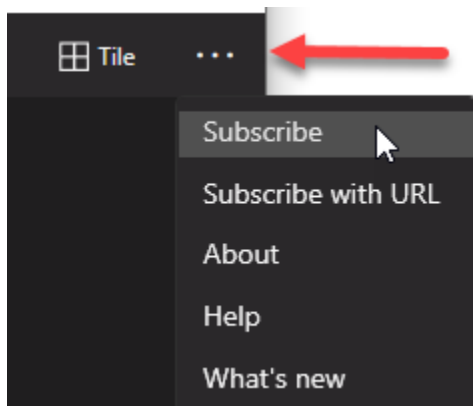
0. Launch the Remote Desktop Application by clicking on the 'Start' button



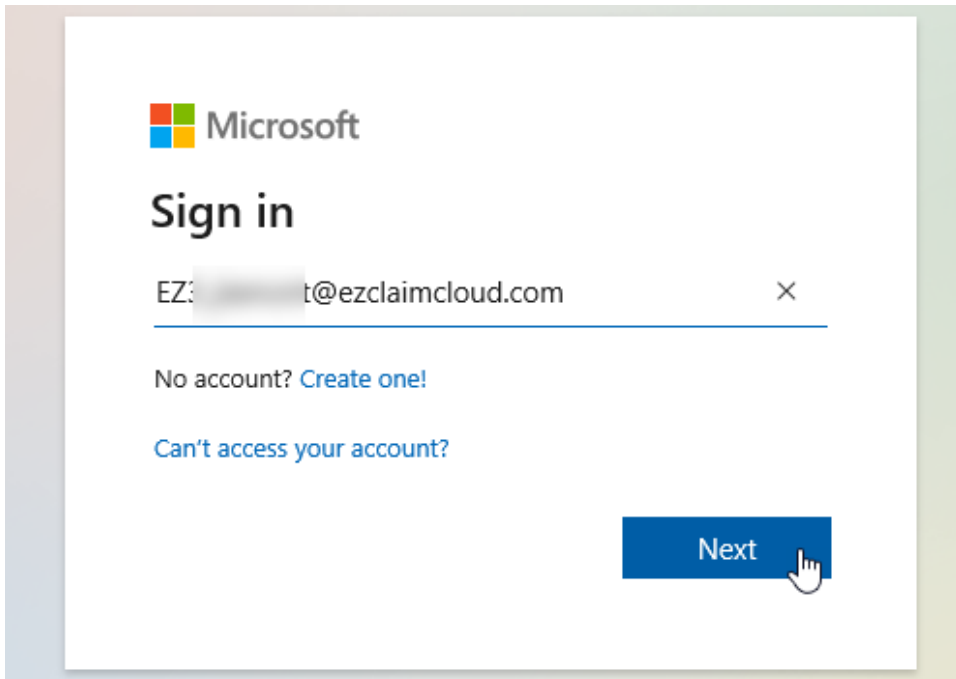
1. On the 'Let's get started' screen click 'Subscribe'



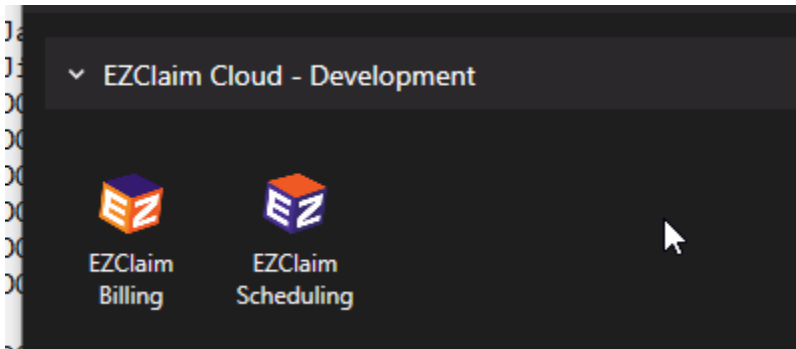
2. If you don't see that screen you can click the settings button in the top right corner and select 'Subscribe' from that menu



3. Enter your username on the next screen hit 'Next'



4. Enter your password
5. You should then see a screen with your applications available to launch. You can double click either application to launch it



6. When launching the application you may be prompted to enter your password again, this will be the same password as earlier. Check the 'Remember me' if you don't want to be prompted for this password again if you were to log out and log back in.

Windows Security



Enter your credentials

These credentials will be used to connect to EZClaim Cloud - Development.

[Redacted]

Password

Remember me



[More choices](#)

OK

Cancel